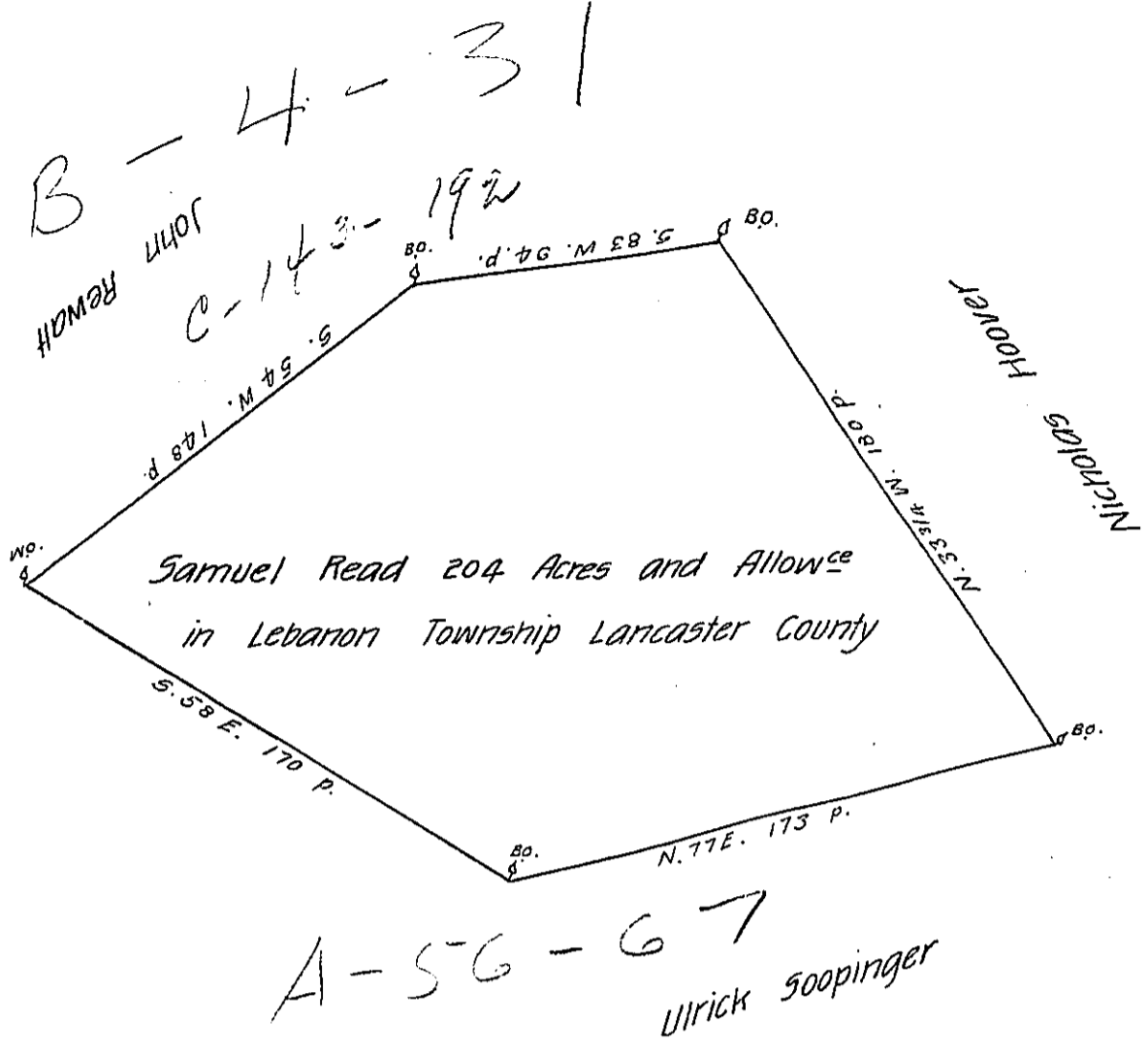


FORM No. 1.



A Draught of Samuel Reeds Land Situate in Lebanon Township in the County of Lancaster. Containing Two hundred and four acres and Allowance By Virtue of the Honourable the Proprietary Warrant dated the 23^d day of March 1738

Survey'd the 16 May 1740.

By Tho. Cookson

To Nicholas Scull Esq^r
 surv^r Gen^l

IN TESTIMONY that the above is a copy of the original remaining on file in the Department of Internal Affairs of Pennsylvania, made conformably to an Act of Assembly approved the 16th day of February, 1833, I have hereunto set my Hand and caused the Seal of said Department to be affixed at Harrisburg, this twentieth day of March 1906

George Brown
 Secretary of Internal Affairs.